

FROM DARKNESS



... TO LIGHT

Explore stunning works from internationally renowned artists such as **Graham Sutherland, Elisabeth Frink, Patrick Heron and Maggi Hambling**

at

**St Mary's
Quarry Street
Guildford GU1 3UP**

9 March to 5 April 2026

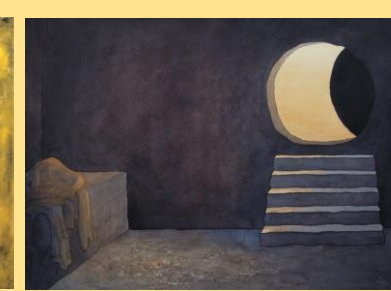
Free public opening times will include
Tuesdays, Thursdays, Fridays and Saturdays
9 March – 5 April 11.00 – 15.00

Events open to all:

Wednesday 11 March * Ticketed event	19.00	A Journey through the Passion: Prof. Ben Quash in conversation with Rev. Karen Case-Green
Thursday 12 March	12.30	A Lunchtime Lent Reflection: Rev Sarah Hutton introduces three water-themed images
Saturday 14 March	09.30 to 11.30	Practical Aspects of Spirituality: Dark ... Light ... the Spirit in paint: Rev. Paul Glass
Thursday 19 March	12.30	A Lunchtime Lent Reflection: Rev. Karen Case-Green introduces Lee-Elliott's Crucified tree-form – the Agony.
Friday 20 March * Ticketed event	19.30	From Darkness ... to Light: Reflections in music and poetry, with poet Alwyn Marriage and 'cellist Annelies Terry.
Wednesday 25 March * Ticketed event	19.00	A Door to the Holy: Contemporary Art & Faith A talk by Laura Moffatt
Thursday 26 March	12.30	A Lunchtime Lent Reflection: Rev. Brian Roberts introduces Cazalet's Fool of God and Brokenshire's Pentecost
Sunday 29 March	18.00	Shadows of the Cross - a Palm Sunday Reflection including music from <i>In Nomine</i> Choir
30 March – 5 April		Programme of events for Holy Week to be published on the website

* Ticketed events: £10 each
see Eventbrite for
MMAC Guildford

More details at
www.htsmguildford.org/mmac-2026
For further enquiries:
MMAC2026@htsmguildford.org.uk



Mark Cazalet: Fool of God. Lee-Elliott: Crucified tree-form – the Agony. Richard Bavin: The Empty Tomb.

Images from the Methodist Modern Art Collection © TMCP, used with permission.
www.methodist.org.uk/artcollection